

The Augusta

2,584 Sq. Ft.



ARTIST RENDERING
SOME ITEMS SHOWN
MAY BE OPTIONAL



2760 Charlestown Road
Lancaster, PA 17603

P: (717) 394-6621
F: (717) 394-6729

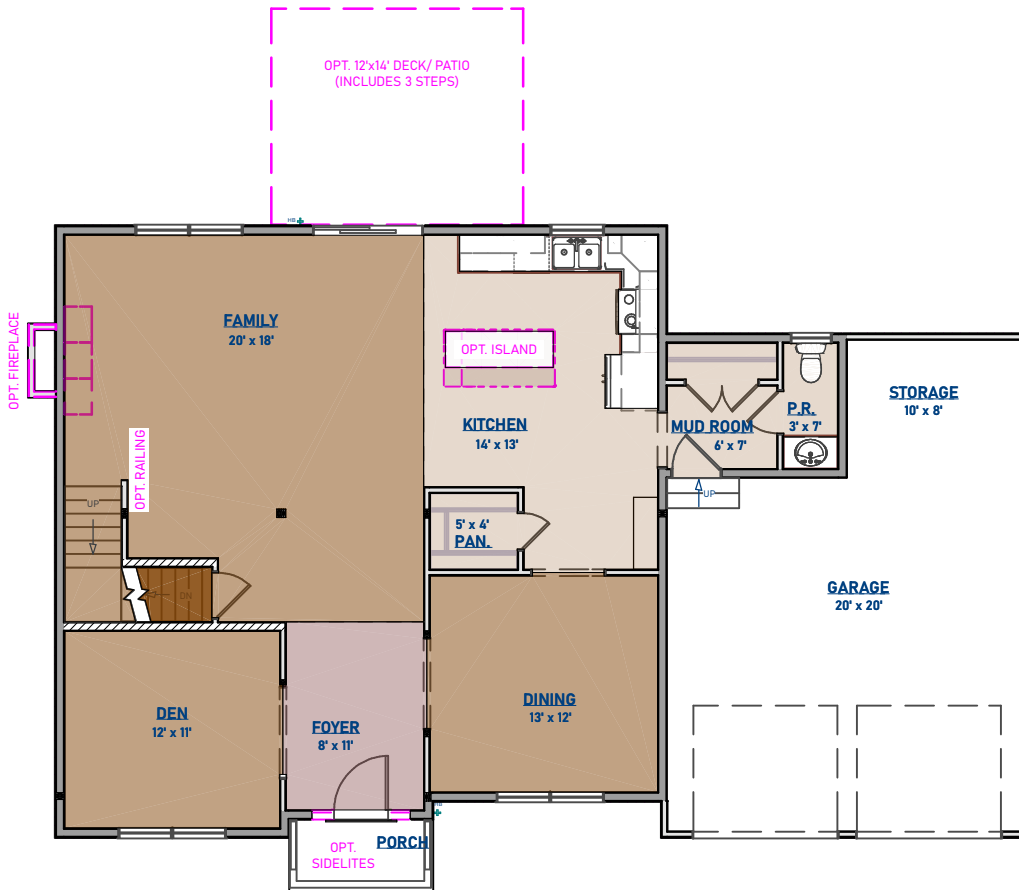
FEATURES:

- 2-STORY
- 2-1/2 BATHS
- GARAGE STORAGE
- DEN
- 2-STORY FOYER
- 4 BEDROOMS
- EAT-IN KITCHEN
- WALK-IN MASTER CLOSET
- 2-CAR GARAGE
- 2ND FLOOR LAUNDRY

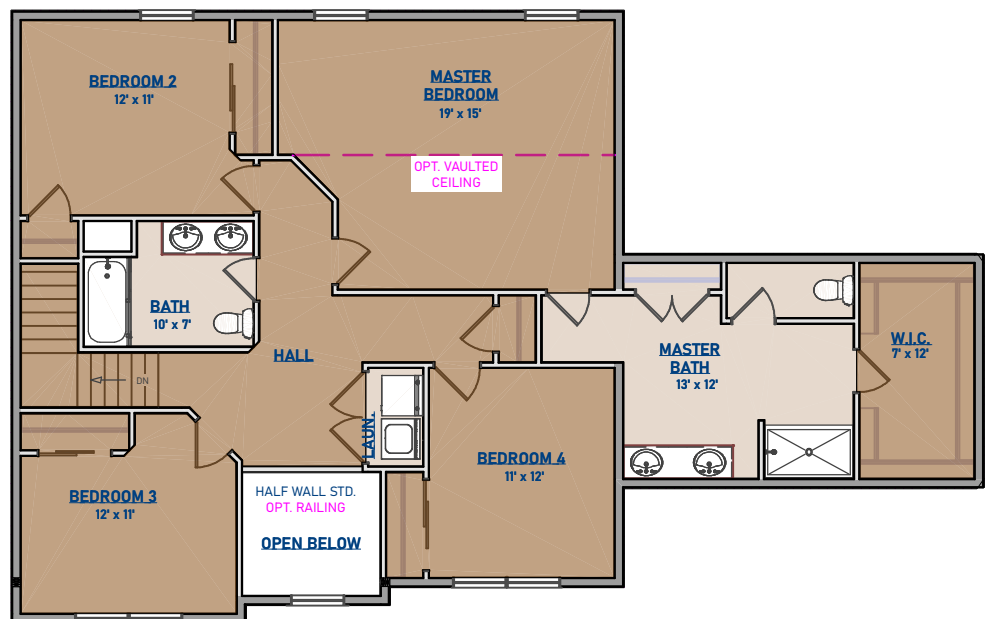
* **OPTIONS:** ALTERNATE ELEVATIONS
FIREPLACE
DECK
VAULTED CEILING
MASTER BATH LAYOUTS

The Augusta

2,584 Sq. Ft.



FIRST FLOOR



SECOND FLOOR